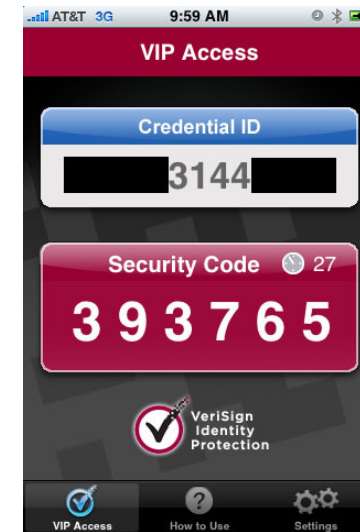


Two Factor Authentication

Solution for the City of High Point

Two Factor Solutions

- Authenticators for two factor solutions
 - Hard Tokens
 - Soft Tokens
 - Certificates
 - Pin Numbers
 - Passwords
 - Biometrics
 - Smart Cards



RSA Solutions

- RSA Authentication Manager
 - Centralized Management
 - Supports multiple methods of 2 factor authentication
 - Scalable

Software Authenticators

Hardware Authenticators

Authentication Agents

Authenticators

- Token Code generators
- Hybrid Authenticators
- Smart Cards
- Software Token Applications
 - Android, Blackberry, iPhone, iPad, Nokia, Windows Mobile
 - Mac OS X, MS Windows
 - SecurID Toolbar – Integrates with IE



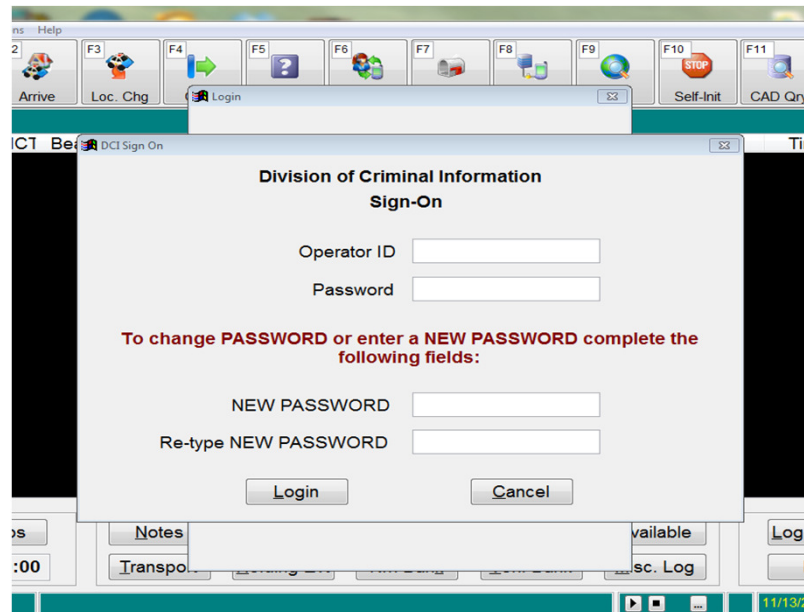
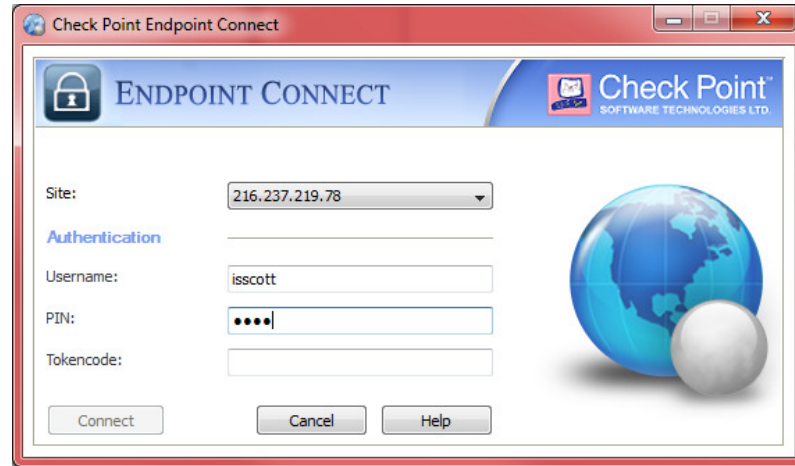
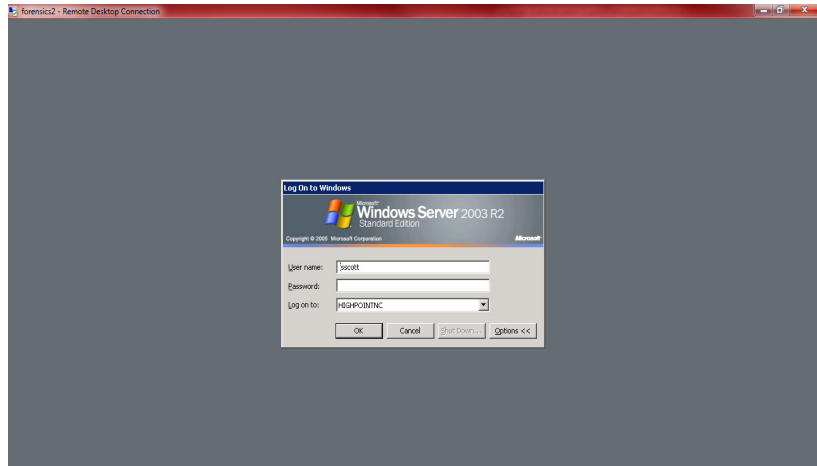
Authentication Agents

- MS Windows
- Sun Java Web Server
- Apache Web Server
- IIS
- PAM – for Unix and Linux systems
- VPNs (Checkpoint/Netmotion)
- Many more network, and appliance based solutions

Our Solution

- We have an RSA Appliance hosting the main database and managing our authentication
- The base purchase included the ability to replicate one copy of our working database to another appliance for Disaster Recovery and High Availability
- This appliance is to be located to our new Disaster Recovery site in the near future.

Step by Step

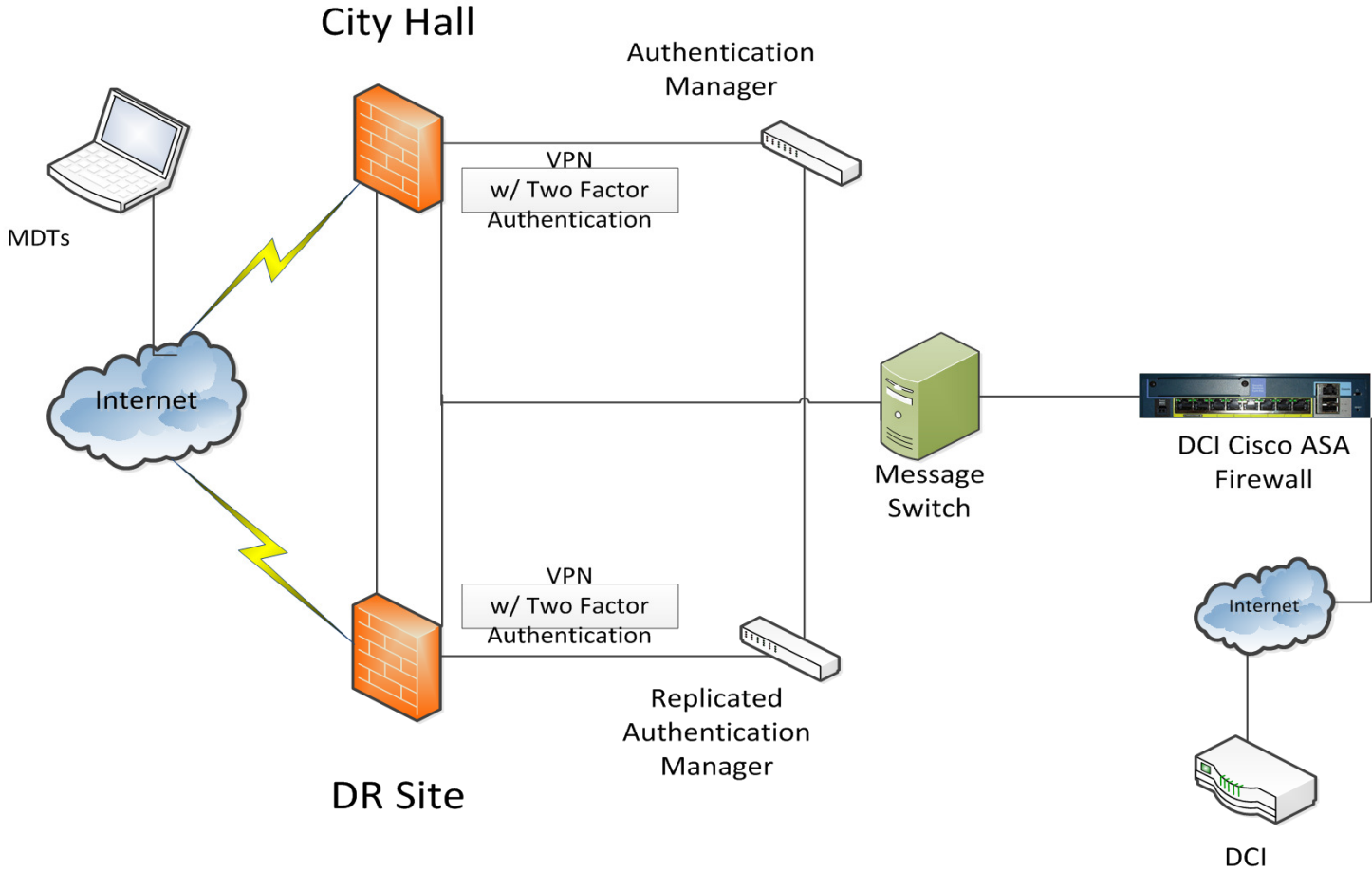


Appendix

Remote/Mobile Connections

- We have used Checkpoint Secureclient, Checkpoint Endpoint Connector, and Netmotion to provide mobile connections to our network using RSA SecurID tokens to provide two factor authentication when accessing sensitive servers on our network.
- With the potential to move our applications to a Citrix deployment, the same authentication can be used to provide access to the future Citrix environment.

Architecture



MDT Connection

