

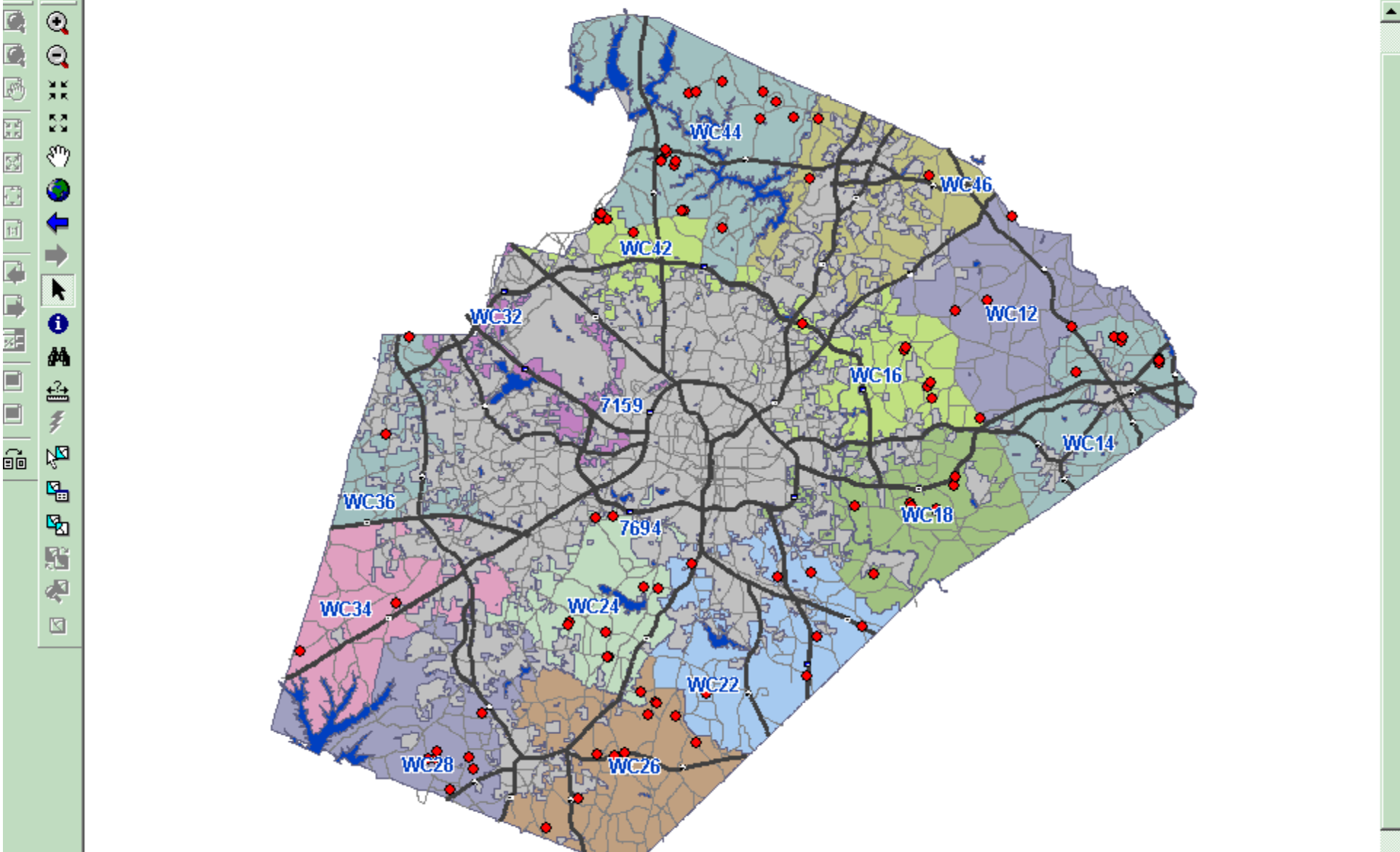
# Pawn Data Reporting in Wake County North Carolina

Editor Task: Create New Feature Target:

Network Analyst Set Selectable Layers... Network Dataset: Spatial Analyst Layer:

ET Commands

SR\_Households



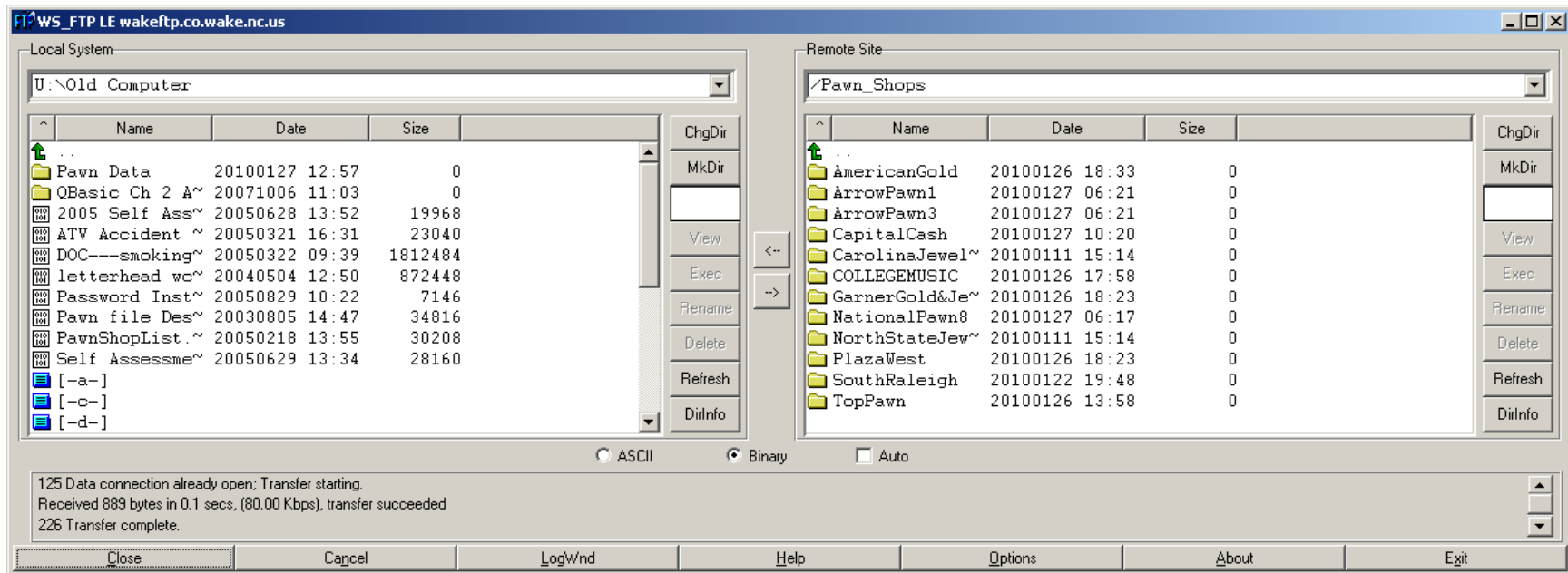
# Locally Owned Database Advantages

- Ensure security of data
- Ability to mine data for trends
- Ability to compare information to other databases

# Locally Owned Database Disadvantages and Challenges

- Cost associated with maintaining database
- Infrastructure costs
- Secure data transfer to our facilities

# How do we get our data?



**Session A** [min] [max] [close]

File Edit View Communication Actions Window Help

CMWK00 Custom Processing Menu QPADEV00L7  
Pawn Shop Processing 1/27/10

Select Menu Option====> \_

- 1. Import Pawn Shop File
- 2. Print Pawn Shop Audit Report
- 3. Interactive Pawn Shop Audit
- 4. Merge Pawn Shop data with Crimes

F12=Previous Menu

MA a 05/028

I902 - Session successfully started \\wco-prt01\PRTS274 on

**Play Macro/Script** [close]

Select Macro/Script

Macro/Script:

American [ ]

American [ ]

Arrow1 [ ]

Arrow3 [ ]

Boulevard [ ]

Cancel Help

# Where does the data reside?

```
Session A
File Edit View Communication Actions Window Help
[Icons]
CMPWNS                WAKE COUNTY SHERIFF'S OFFICE                1/27/10
Change                Pawn Case List                                13:43:57

Position To . . . 1 - 10 - _____

Type options, press Enter.
  2=Change  3=Copy  4=Delete  5=Display  6=Print  7=Case Summary

Opt Case Number  Date  Name                    Pawn Shop
-  1-99-009167  6/01/00  MARTIN, MARVIN          NORTH STATE PAWN SHOP
-  1-99-009166  6/01/00  FARGIS, JAMES           NORTH STATE PAWN SHOP
-  1-99-009165  6/01/00  BENNETT, MATTHEW       S & K MERCHANDISE & PAWN
-  1-99-009164  6/01/00  BENNETT, MATTHEW       NORTH STATE PAWN SHOP
-  1-99-009163  6/01/00  WILLIAMS, MARK         NORTH STATE PAWN SHOP
-  1-99-009162  6/01/00  COX, CHARLES           NORTH STATE PAWN SHOP
-  1-99-009161  6/01/00  SOLANO, MELINDA        NORTH STATE PAWN SHOP
-  1-99-009160  6/01/00  SOLANO, MALINDA        NORTH STATE PAWN SHOP
-  1-99-009159  6/01/00  KELLY, DEBRA           NORTH STATE PAWN SHOP
-  1-99-009158  6/01/00  KING, JERMAIN          NORTH STATE PAWN SHOP
More...

F3=Exit  F5=Refresh  F6=Add  F7=Location Lookup  F8=Property Lookup
F9=Name Lookup  F14=Retrieve by Ticket#  F17=Subset  F21=Print List

MA a 04/030
I902 - Session successfully started \\wcso-prt01\PRTS274 on
```

# How do we share the data with others?

```
Session A
File Edit View Communication Actions Window Help
COMTECH1      Computer Technology Menu One

 1 HTE PSC Main Menu
 2 Crimes Offense
 3 Crimes Arrest
 4 Crimes Warrant
 5 Crimes Pawn
 6 Crimes Global

 8 Magistrate System

10 AOC/DMV/DOC
11 DCI
12 County Mainframe
14 Command Line/Screen
15 Garner AS/400
16 Printer Control Menu

20 Jail Inquiry
21 Jail Enter Update
22 Return of Service Inquiry
23 Return of Service Enter Update
24 Official WCSD BB
25 AS/400 System BB
26 Change AS/400 System BB
27 System Users BB
30 Office Vision 400
31 Check/Find Zip Code
32 Query/400
33 Build RPD Arrest File
35 GO COMTECH2 MENU

90 Sign Off System

Selection or command
===>

F3=Exit  F4=Prompt  F9=Retrieve  F12=Cancel
F13=Information Assistant  F16=System main menu

MA a 20/007
I902 - Session successfully started w\wco-prt01\PRTS274 on
```



# Who does Law Enforcement want to oversee?

- Pawnshops
- Scrap Metal Dealers
- Precious Metal Dealers
- Secondhand Goods Vendors