

# Kinston Department Of Public Safety



**CHIEF SCOTTY HILL**

Deputy Director

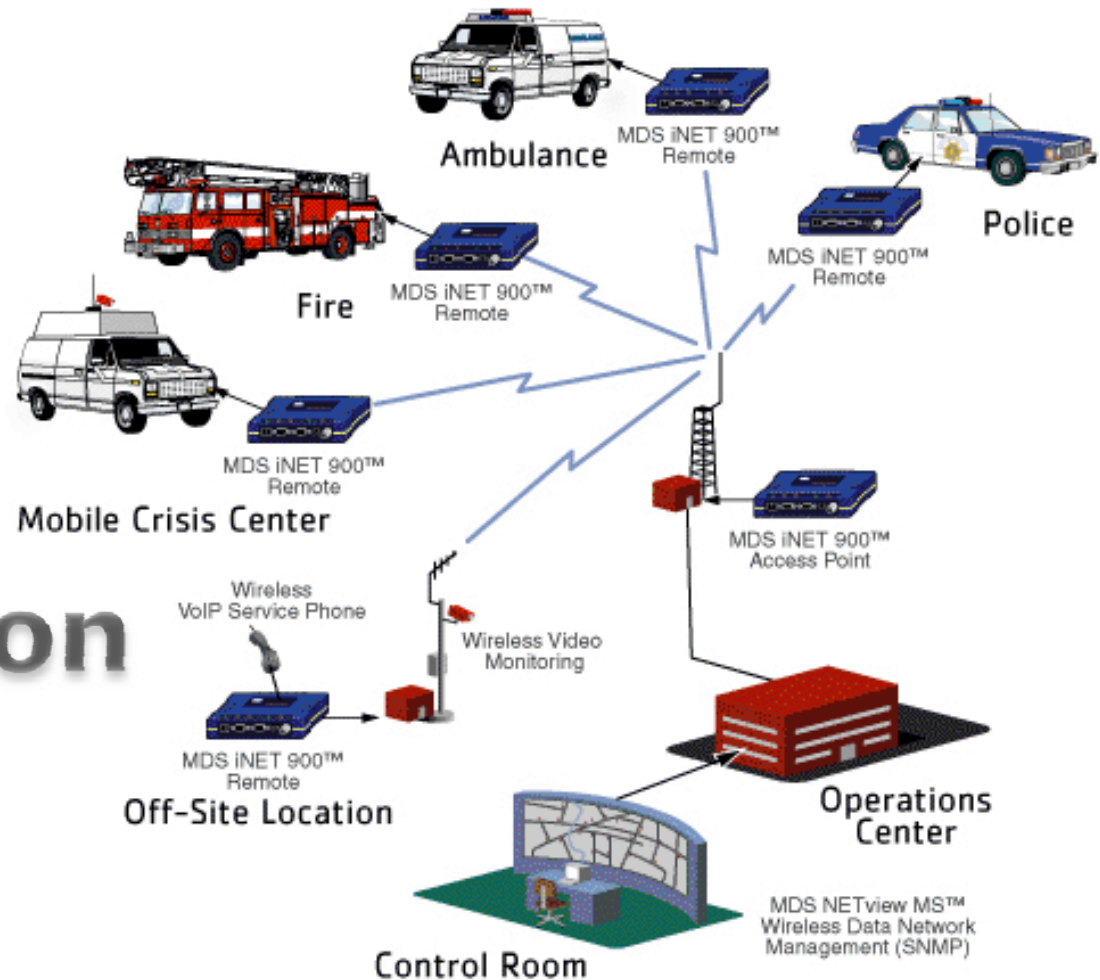
# The Issues

---

- **The state database access was through the State Network (CJIN). This network was slow and significant restrictions limited what could run across the network .**
- **Could not use our current Trunk System for this network.**
- **Wanted access to our private network, RMS, wireless video cameras, as well as email and the Internet from the vehicles.**
- **Wanted to implement field base reporting & access to CAD at the 911 center.**
- **Wanted city-wide coverage with room for growth.**

# The Vision

## Full Integration

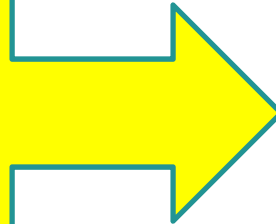


# DECISION

---

**Met with IT staff from city & county, communication providers (vendors), 911 director, law enforcement reps, records supervisors, RMS provider, & senior communications technicians.**

**The  
solution  
?**



The BLUE Box

Lifetime firm ware upgrades.

902-928MHz Frequency Hopping Spread Spectrum (10 Zones-8 Frequencies each)

## **MDS iNET 900™**

Access points required for radios to communicate with each other.

Encryption: RC4-128 \* new ones have (Inet2) AES-128

Serves as an Ethernet Bridge

Compression with Automatic Key Rotation every 1-2 minutes.

Serial ports & ethernet ports can be used simultaneously



**False login lockdown after 3 attempts**

**Approved remotes or access points by utilizing MAC addresses.**

**Not 802 compatible**

**Programming & Access via web interface or serial port**


**-90dbm for 512kbs -  
100dbm for 256kbs**

**Does not have quality of service but  
Motorola backhaul does**

***MDS iNET 900™***

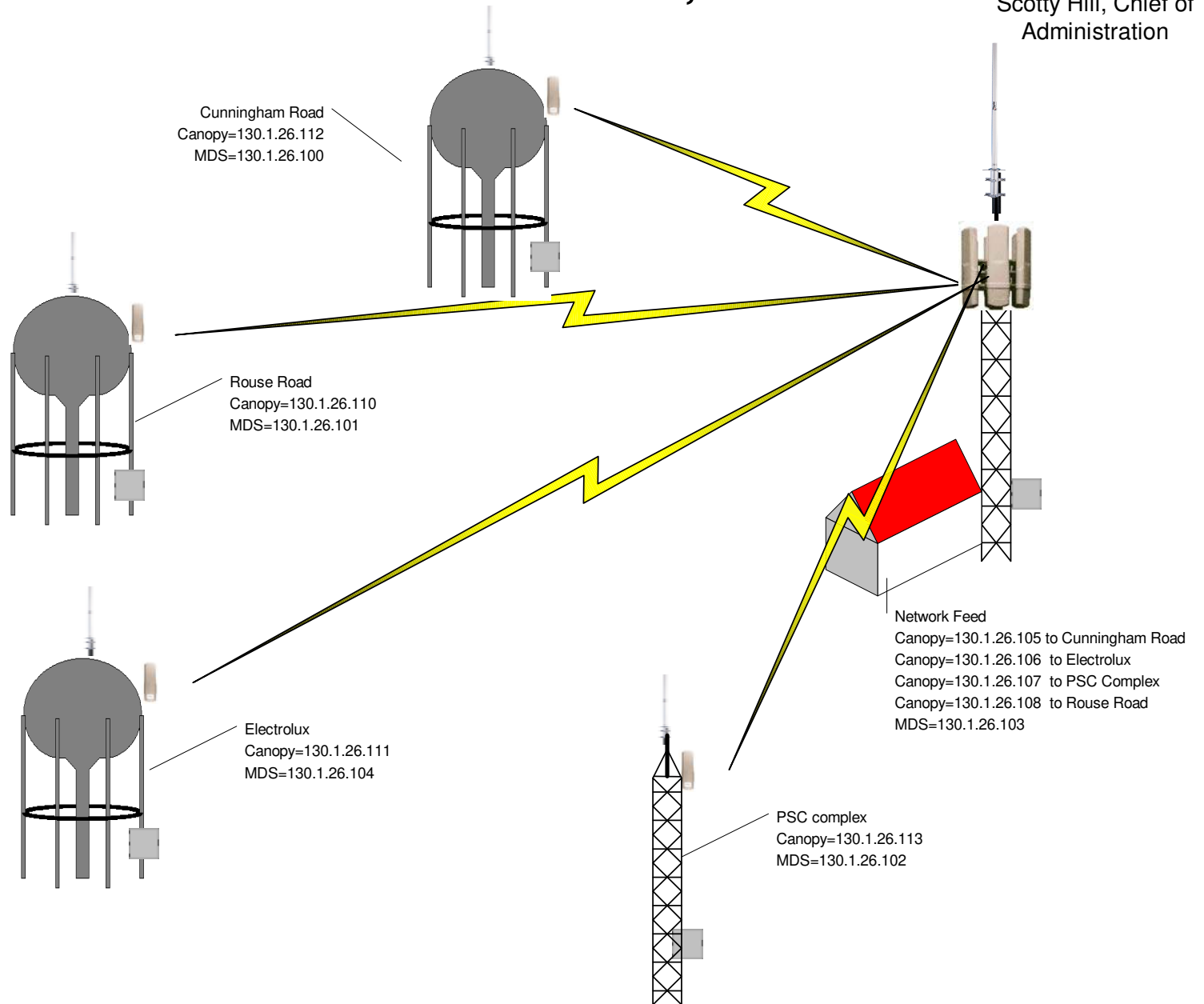


**No specialized software required – web browser or telnet session**

- 
- 
- Kinston needed to cover a service area of approximately 20 square miles.
  - Needed 5 iNET Access Point to cover the area based on preliminary test.
  - We were able to utilize existing water tanks and towers.

# Kinston, NC

Kinston Department of  
Public Safety  
Scotty Hill, Chief of  
Administration





# iNET Access Point Locations



Canopy™ Wireless  
Broadband Platform

Kinston, NC  
Typical Tank Site

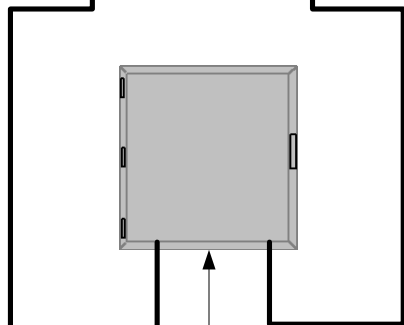


6dB Omni  
Antenna

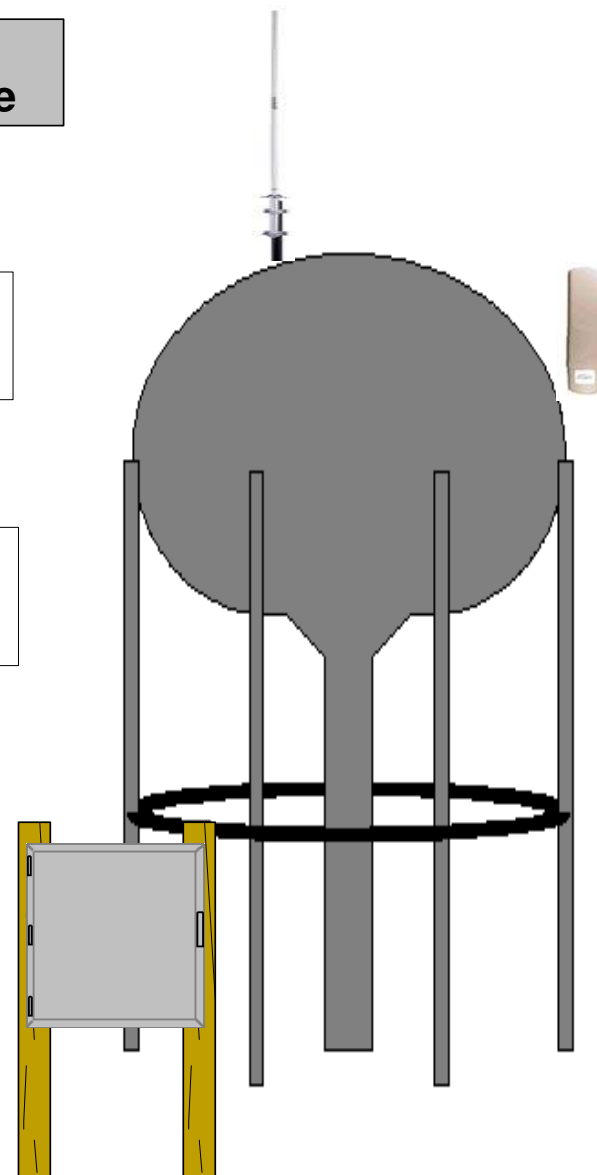
200 feet 7/8  
Coax

Canopy  
Subscriber  
Module

200 feet of  
Outdoor  
CAT 5



P70 Enclosure  
Will contain one iNet with  
power supply, Canopy power  
supply, Ethernet crossover  
cable and AC outlet



# Motorola Canopy



# Kinston PSC Complex Access Point Site

---





# Canopy SM with Reflector iNET Omni Antenna

---



# The Canopy CMM and an iNET AP

---



# Motorola Canopy Management Module

---





# MDS iNET Access Point

---





# iNET Installed in the Cruiser

---



# Panasonic Laptop Connected To MDS iNET

---

This PD Cruiser can cruise the Web with a usable data rate of 340K!

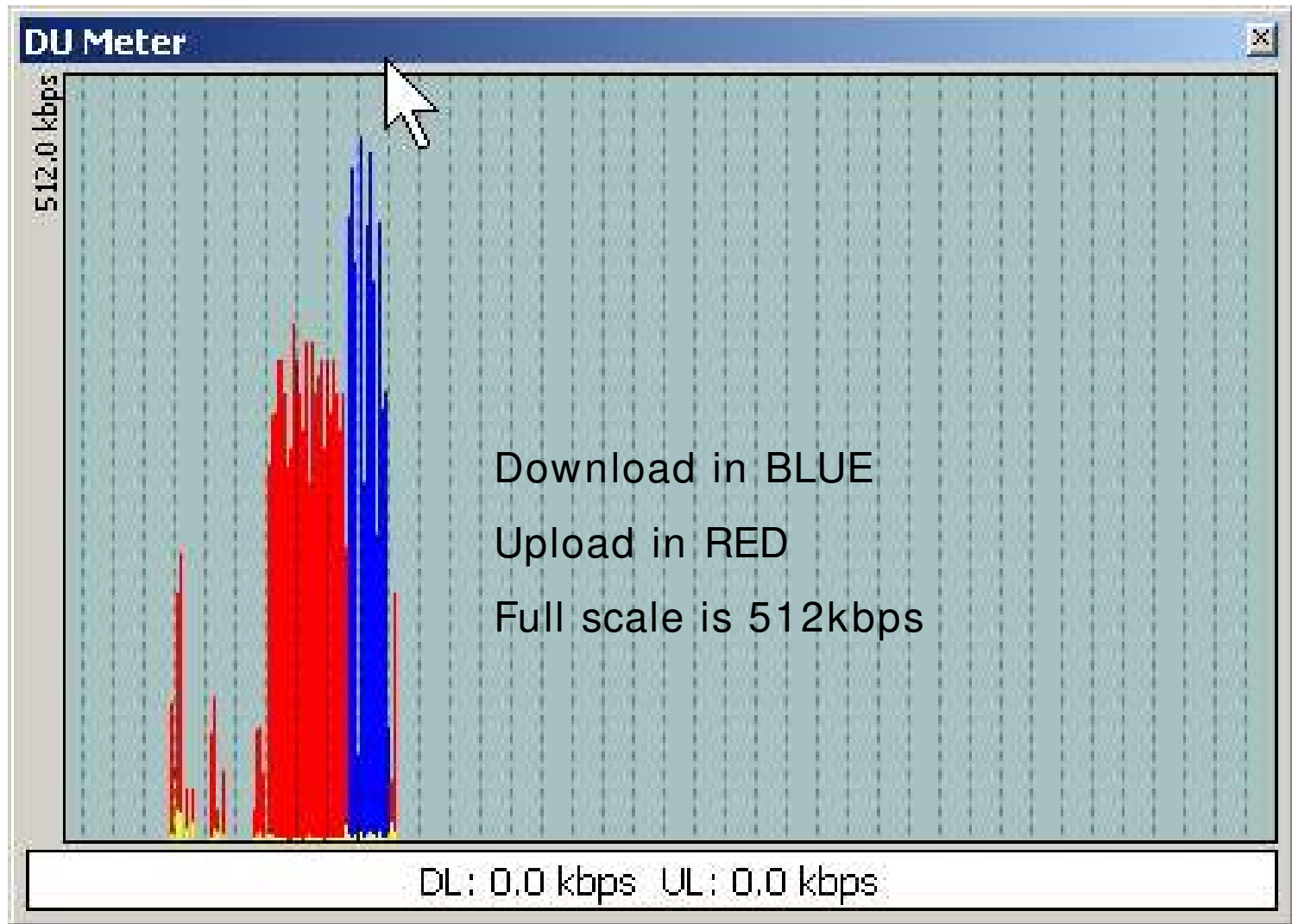


# 900 MHz 5dB Elevated Feed Antenna

---



# Mobile Download and Upload Speeds





# Current USE

DCI & NCIC Access

Field Base Reporting

CAD Access – Voiceless Dispatch

E-Citation & TRACs

Intranet – Policies, Emergency Response Plans, Employee Contact Info, Ban List, Recent Crime Data, Etc. (unlimited)

Chat, Instant Messaging, & Internal Email

Internet – AOC, Dept. of Corrections, Other Resources (unlimited)

Mobile GIS  
Includes Drawings Of Buildings & Floor Plans



Opened the door to endless possibilities

Wireless IP Cameras in High Crime Areas

# FUTURE USE ?

---



Access to school and  
business cameras



Monitor SWAT  
deployments via wireless  
IP camera



Integrated voice and data  
capabilities especially in  
NIMS incidents

# Questions

---

