

Charlotte-Mecklenburg Police Department



Charlotte-Mecklenburg Police Department Real Time Crime Center



Purpose

Leveraging technology real time to assist in addressing crime – focus on most serious crimes, primarily violent felonies, and events that are significant in nature during the initial response/stages of the investigation

Location and Contact

- CMPD - Law Enforcement Center
- Second Floor – old command center space
- Monitor radio channel of priority one calls while assisting
- Phone: 704-336-3707 (not a public number)
- Request dispatch contact RTCC
- Normal hours of operation: 0700-0300

Resources: Databases and Alerts

CMPD LIVE

- Asset/Resource location

Data Bases

- Examples
 - KBCOPS
 - CJLEADS
 - COPLINK
 - CAD-I/Net

Electronic Monitoring

- Proximity Report

Shot Spotter

- Flex Alerts
- Incident Portal
- Locations
 - Central – 2 sq miles
 - Providence – 1 sq mile
 - Hickory Grove – 2 sq miles

find all incidents between:

begin:

end:

and of **type(s)**:

- Single Gunshot
- Multiple Gunshots
- Possible Gunfire

click to choose from full list

and with:

comments:

Address(Location):

Flex Id between: and

CAD ID:

Tags:

which occurred in:

Beat(s):

District(s):

Include auto-acknowledged incidents

and in **coverage area(s)**:

- CharlotteNC
- CharlotteNCGrier
- CharlotteNCHickoryGrove

click to choose from full list

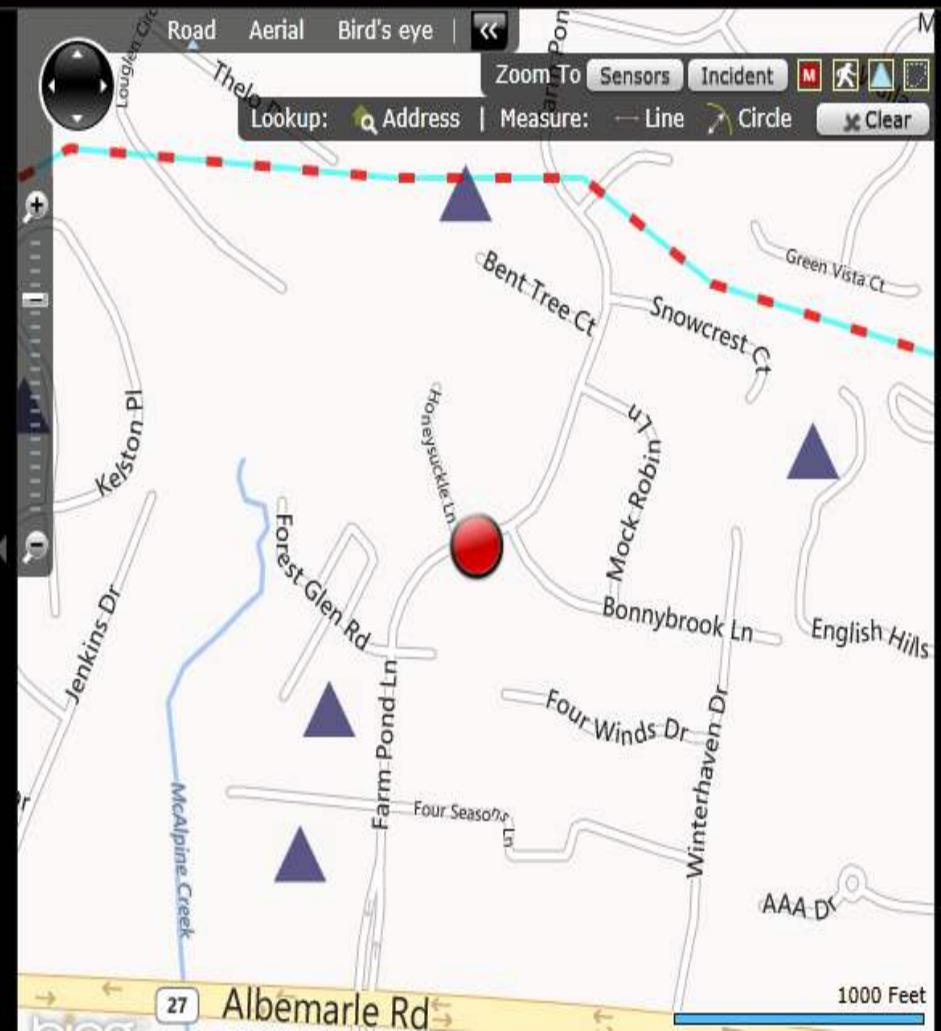


Search Results

20593

sort by: **Date** group by: **(none)** (optional) show: **(choose columns)**

Type	ID	Date	Time	Address	Rnds	CAD	Beat
SG	20593	21-Apr-2014	20:54:02	6200 Bonnybrook Ln	1	O04212055	1211
SG	14384	21-Apr-2014	19:26:21	322 Neely St	1	O04211928	1612



Resources: LPR's & Cameras

License Plate Readers

- Total assets:
 - 95 fixed cameras covering 21 intersections
 - 13 Road Warrior trailers
 - 4 mobile/handheld devices
- Approximately 1.5 million reads per week
 - 300 stolen vehicles
 - 400 stolen tags
- Data retained 6 months

Cameras

- Partnership between CMPD, CDOT, and CATS
- Access to approx. 1,000 cameras
- Recorded video stored for 10 days
- Future access to private video

Operations

- Immediate Response
- Post Correlation Support
- Proactive Resource Use



Immediate Response

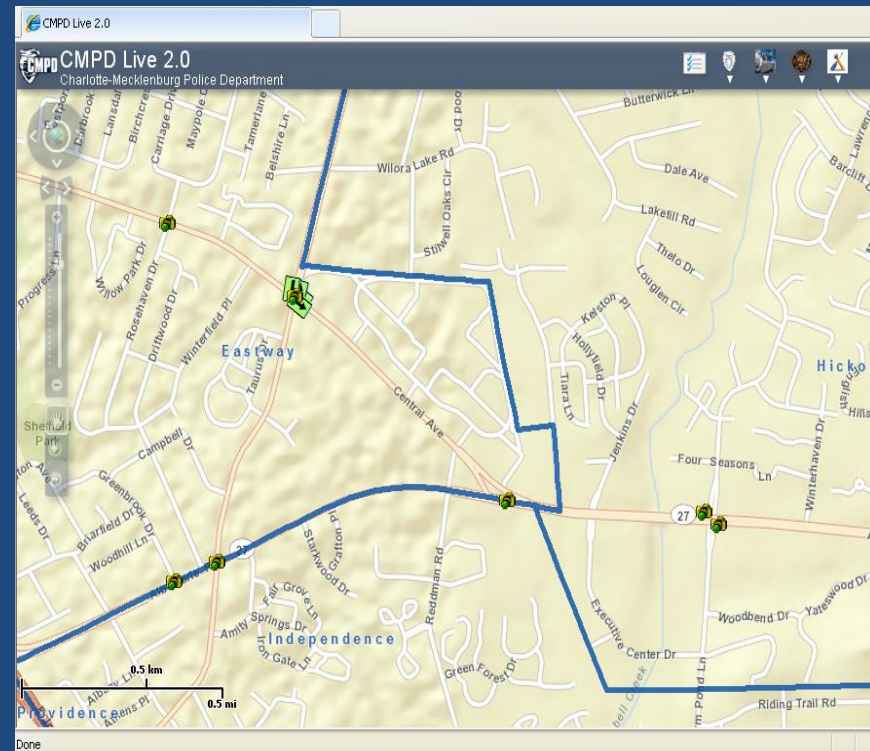


- Violent Felonies
- Significant Events
- Examples:
 - Homicide
 - ADW serious injury
 - Kidnapping
 - Armed Robbery
 - SIOD
 - Special Events

Immediate Response

Information Sources

- CAD/iMobile
- Police Radio
- CMPD Live
- Officer on Scene
- Shot Spotter



Immediate Response

- Monitor for priority events
- Switch to appropriate talk group
- Monitor call comments and related radio traffic
- Check assets/resources
- Report findings to investigating officers
- Complete KBCOPS supplement and other documentation as necessary



Post Correlation Support



- Violent Felonies
- Events significant in nature
- Sprees and Trends
- Examples:
 - Advanced video review
 - Advanced LPR support
 - Data Mining

Proactive Resource Use

- Monitoring of resources based on crime trends and/or hot spots
- Placing of resources to address crime sprees
- Division operations
- Support to events drawing significant crowds



Example: Sneakerhead Robbery

- Armed suspects pointed a handgun at the victim, took property, then fled the scene in a gold Infiniti, partial license plate given by victim/witness
- Checked LPR system with partial plate and located possible suspect vehicle.
- Researched vehicle owner and determined previous unlawful use by her 18-year-old foster child, fits suspect description
- Possible destination of suspect relayed to units
- Officer conducted a felony stop and 4 subjects detained
- Robbery Detectives responded and a show up was conducted
- During the course of the show up the victim identified each person who was in the vehicle and their role in the robbery
- The victim's property was recovered
- Two handguns were located.

Example: Motorcycle Bandits

- Three robberies occurred over a nine-day period, two at Kangaroo Gas Stations in Charlotte and one at a CVS pharmacy in Matthews
- Suspects were outfitted in tactical type attire and seemed to have some sort of training in firearms handling
- Suspect vehicles were confirmed to be motorcycles following the third robbery
- Extensive video review was conducted by RTCC
- Results showed that if suspects while conducting the robberies left from and immediately returned to their home base, their place of residence was within a particular apartment complex
- Robbery Detectives followed up at the complex and located the motorcycles and suspects, along with multiple firearms and evidence from the robberies

Conclusion

- Assisted in over 3800 Investigations
- 1520 or 40 % violent offenses
- 645 or 42% violent offenses cleared
- 31% cleared within 24 hours
- 59% cleared within 7 days
- 1020 suspects arrested, including 773 for violent felony offenses

Contact

Captain Allan Rutledge
601 East Trade Street
Charlotte, NC 28202
Arutledge@cmpd.org
(704) 432-0380

