



# COLLABORATION IN GEOGRAPHIC INFORMATION

---

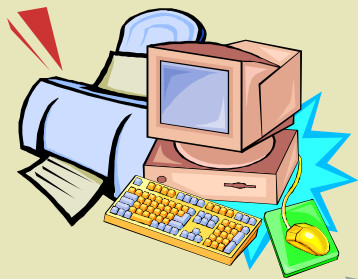
Criminal Justice Information Network  
Board Meeting

November 20, 2014

# Outline

1. Collaboration in Geographic Information
2. NC Parcels Project
3. Engaging Partners
4. Next Steps
5. Discussion

# What is GIS?



**Hardware**



**Software**



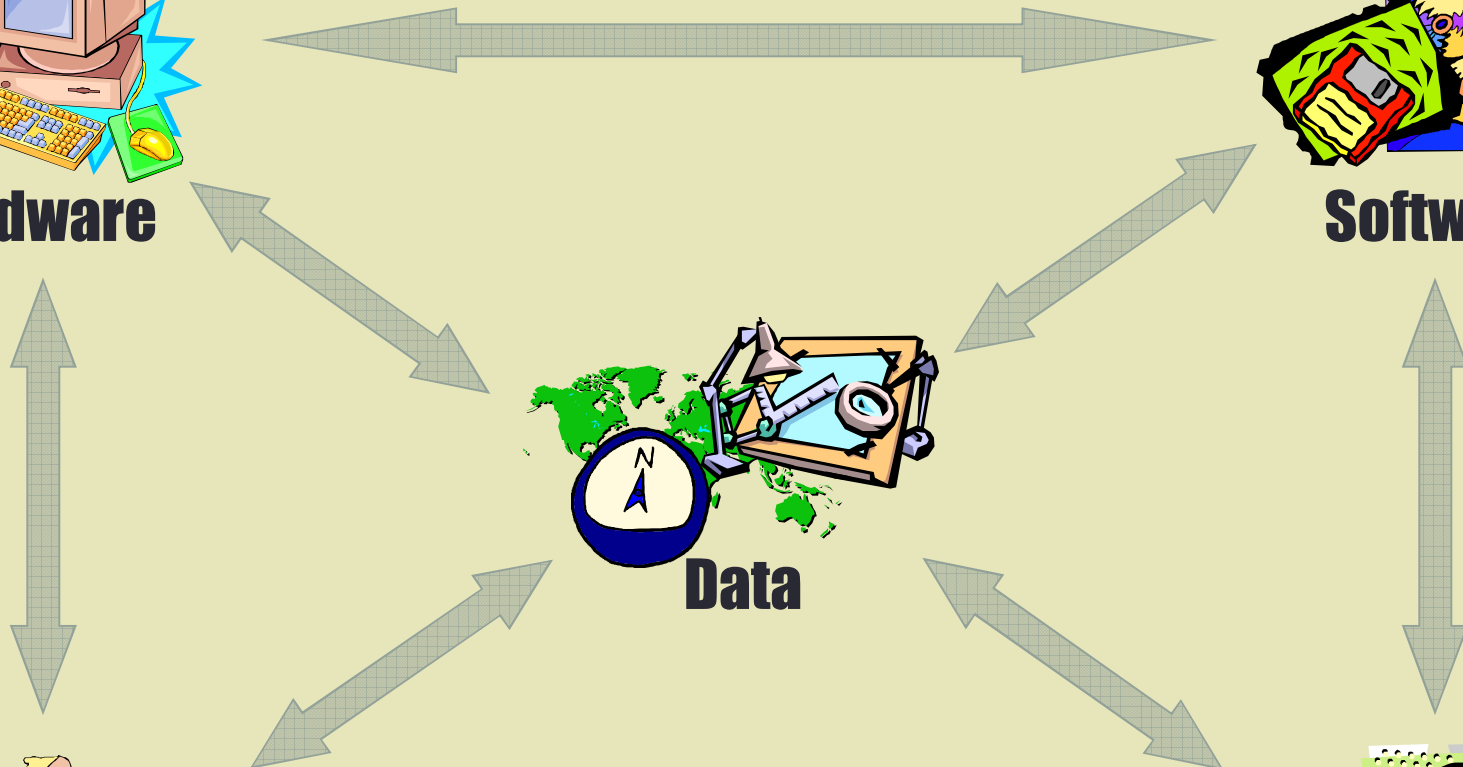
**Data**



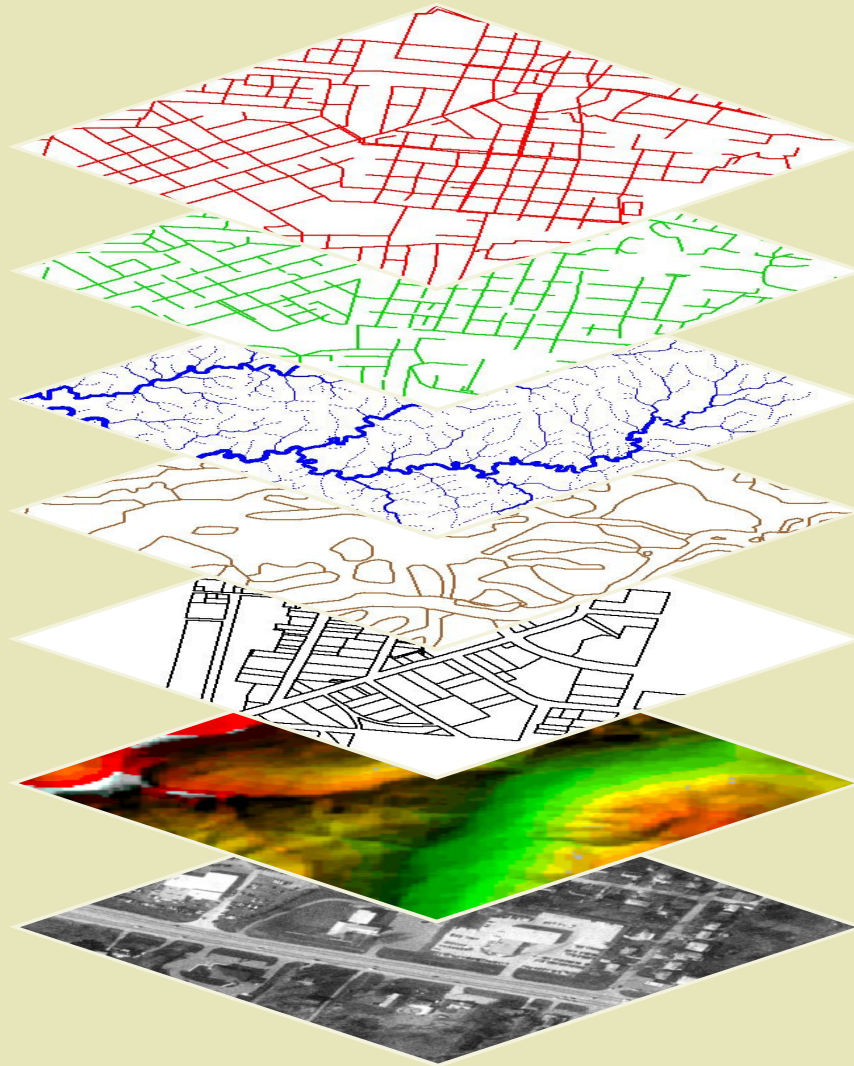
**People**



**Methods**



# GIS Data Are Organized As Layers



**Water Lines**

**Sewer Lines**

**Surface Waters**

**Soils**

**Land Ownership**

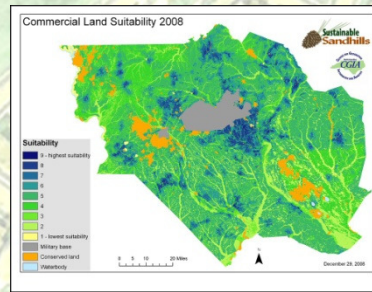
**Elevation**

**Imagery**

# CGIA SERVICES PROGRAM



Challenges

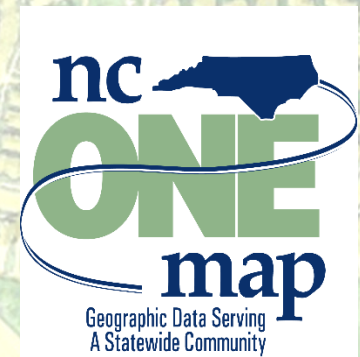
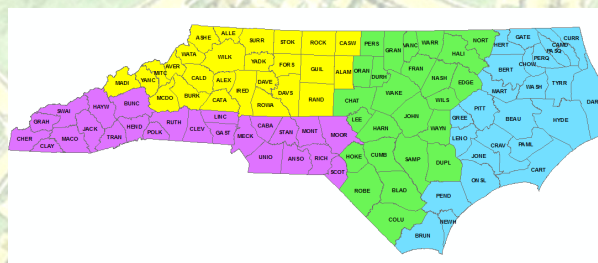


Solutions



Informed  
Decisions

# CGIA COORDINATION PROGRAM



Collaborate

Plan

Share

# Geographic Information Coordinating Council (GICC)

- Statutory, policy body created by General Assembly in 2001
- Article 76, §143-725 thru 143-727
- 33 members
- Public and private sector representation
- CGIA serves as technical staff
- CGIA leads NC OneMap implementation









*Committees inform strategies, plans, policies and standards*

**Local Government Committee**

**State Government GIS Users Committee**

**Federal Interagency Committee**

## **Geographic Information Coordinating Council**

**OITS**

Center for Geographic Information and Analysis

*Council members represent organizations and businesses across North Carolina*

**Management & Operations Committee**

**NC OneMap Governance Committee**

**Statewide Mapping Advisory Committee**

**GIS Technical Advisory Committee**

<http://www.ncgicc.org>

# Council Priorities

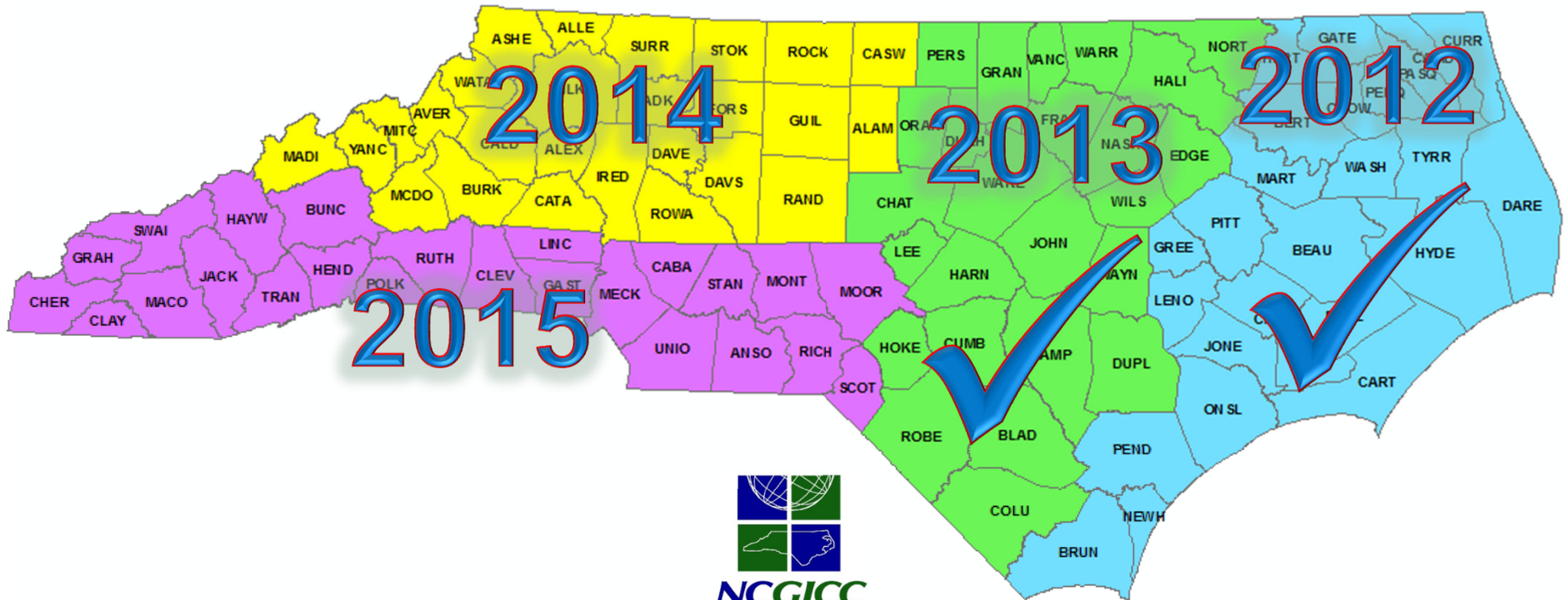
- NC OneMap
- Statewide Framework Data
  - Orthoimagery
  - Addresses
  - Parcels
  - Roads
  - Streams
  - Elevation
  - Governmental boundaries
- Standards

# Statewide Data

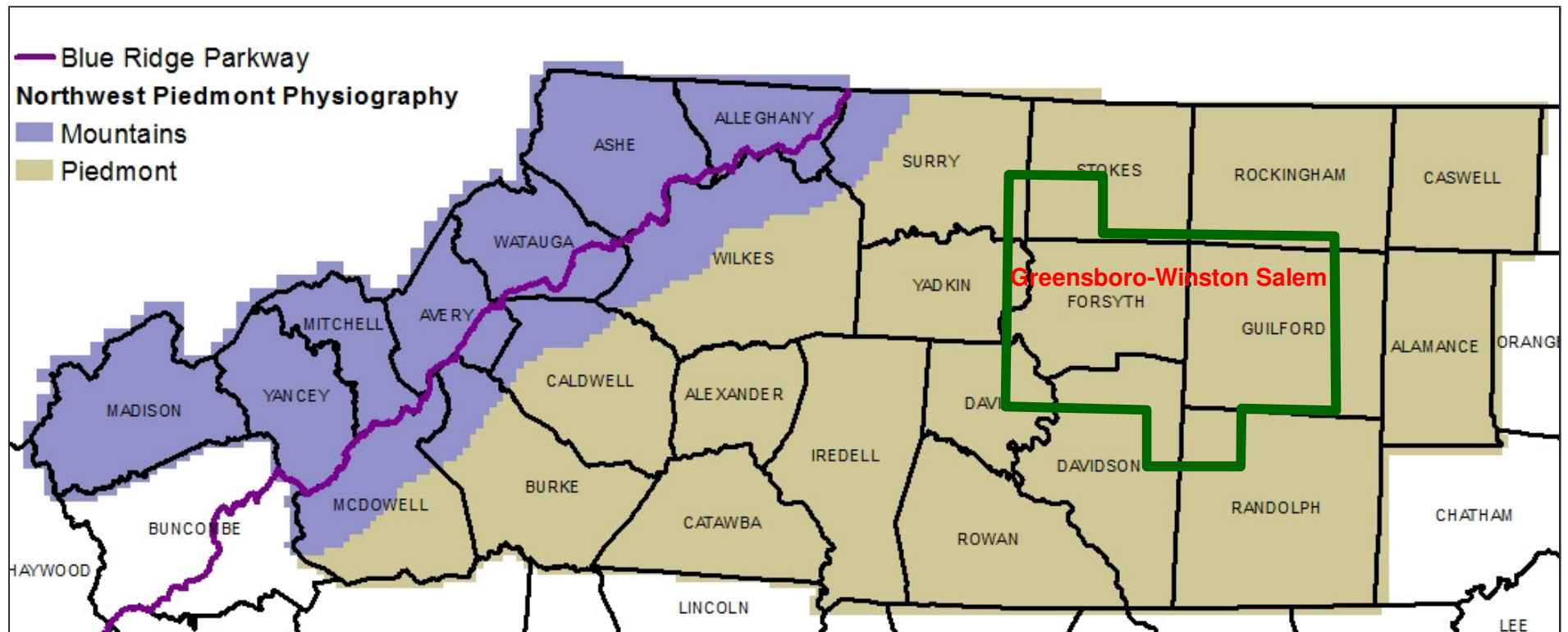
- Consistent
- Complete
- Current
- Reliable
- Documented



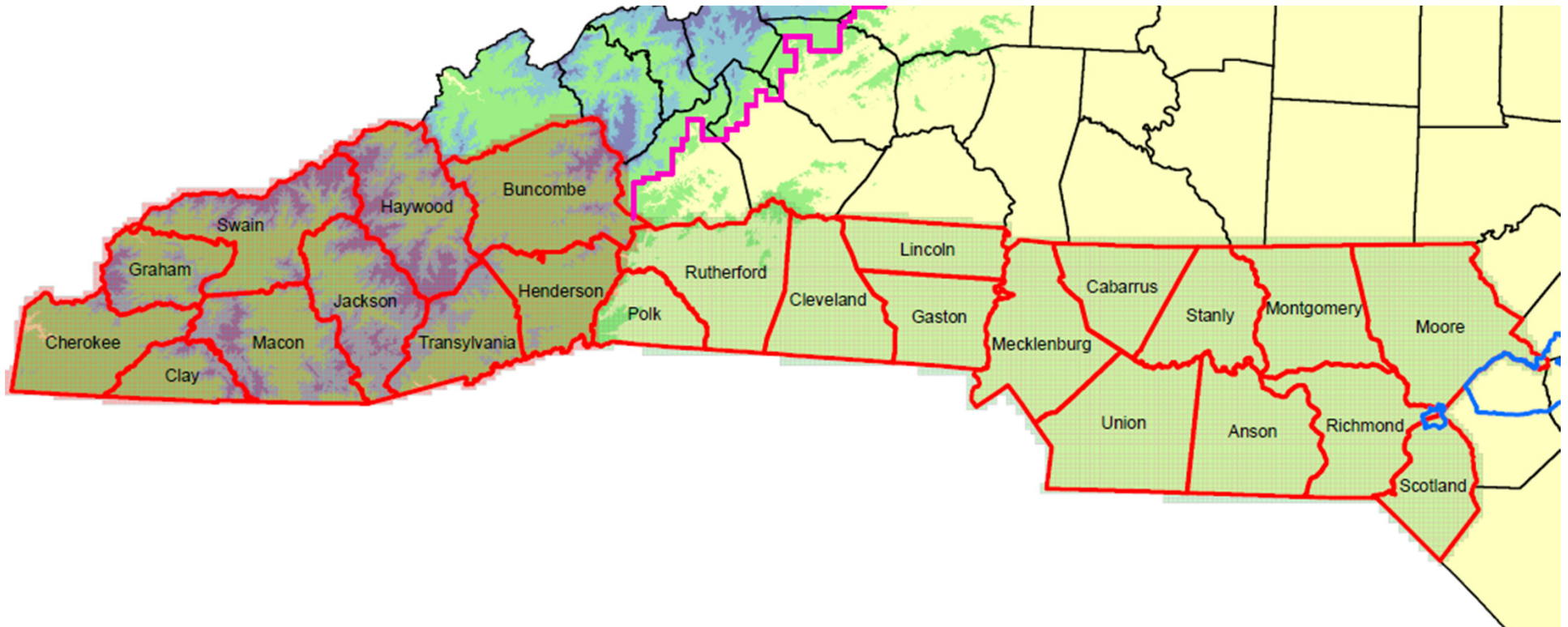
# Statewide Orthoimagery Acquisition Cycle



# Northern Piedmont & Mountains 2014



# Southern Piedmont & Mountains 2015





# NC OneMap

- First stop on the web for geospatial data
- Search and find
- Get data files
- Get web services
- Share





# Example: Parcels

- Statewide, standardized parcel data
- Business need – enterprise data / business processes
- Business case – efficiency / do more / save
  - Economic development, emergency management, transportation planning...

# Real Property in GIS: Parcels...

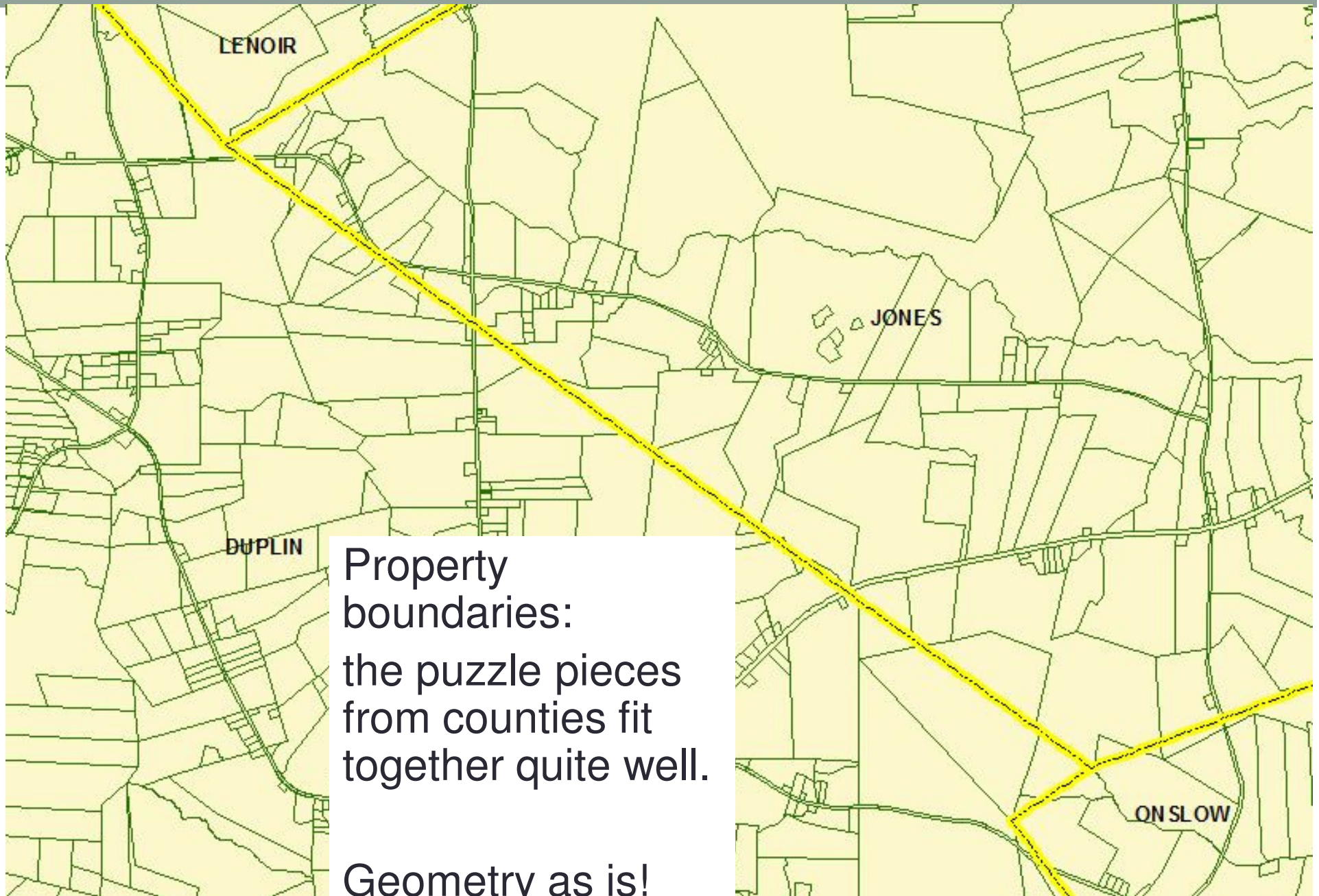


## Why NC Parcels?

- Be prepared to inform decisions
- Have consistent data to answer completely, efficiently, and effectively
- Add value to local government investments in data
- Expand the benefits of good data

# The Parcels Puzzle

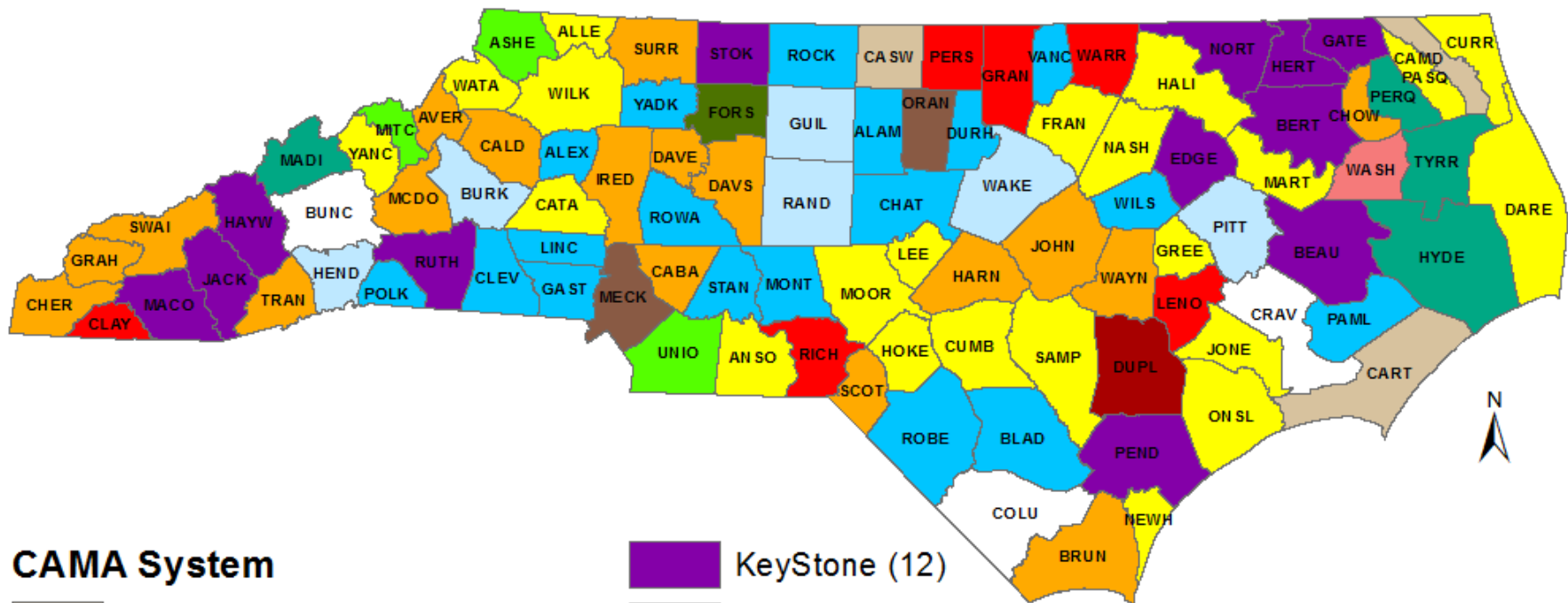







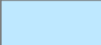










## It's the Data Fields!

- GIS Query: select all parcels that are larger than 10 acres in 3 adjacent counties
- County A: CACRES DACRES
- County B: ACRES
- County C: DEEDED\_ACR TOTAL\_ACRE
- 3 different selections, not 1
- Research on field definitions

# Computer Assisted Mass Appraisal Systems by County, 2014



## CAMA System

 ACS (Xerox) (3)	 KeyStone (12)
 AssessPro (Patriot Properties) (2)	 NCPTS (6)
 AssessWeb (1)	 One Tax (18)
 Bi-Tek (18)	 Pearson Appraisal (4)
 Bormuth (6)	 ProVal (Thomson Reuters) (3)
 CARAT(Eccosystems) (1)	 Tax.Net (1)
 In-House (3)	 Tyler (22)

August 7, 2014



Source: North Carolina Department of Revenue, 2014

# Why Compile 100 Datasets?

More than one county can be involved in:

- Disaster response
- 911 call answering
- Floodplain mapping
- Transportation planning
- Economic development
- Precision agriculture
- Criminal justice
- ...



# Why not just download?

## Published parcel data

- Visit 100 county websites?
- Available for download? Offline copy? For a fee?
- Consistency in property descriptors / tax data?
- Field definitions?
- Metadata?

# Benefits

- **Standard** data fields – consistent for multi-county areas
- **One source** for web services with statewide parcels
- Data consumers
  - **Business uses** range from environmental assessment, land development, owner notification, and many other government and commercial purposes
- County data producers
  - Much easier to create **applications** that solve problems
  - New customers and eyes on local data / **quality**
  - **Metadata** is a product
  - Data **retention** (disaster recovery / archiving)

# Be Prepared to Inform Decisions

- In a 5-county region, how many properties are at least 15 acres in area and have building value less than \$2,000?
- In a 3-county area, what is the total building value of properties within 10 miles of the coast?
- Which counties have the most federal land ownership?
- What properties are at least 20 acres in area and are within 5 miles of an Interstate Highway interchange?

# Solving the Parcels Puzzle



# NC Parcels: Phase 1

- Grant Project
- US EPA Exchange Network
- Teamwork

# Teamwork

## Players

- **Carbon Project, Inc.**
- **Fairview Industries, Inc.**
- **Atlas Geographic Data, Inc.**
- CGIA /ITS
- Dept. of Secretary of State
- Department of Transportation
- NCEM, DENR, DOR...
- Tribal and local partners
- **GICC and committees**
- Enterprise PM / ITS

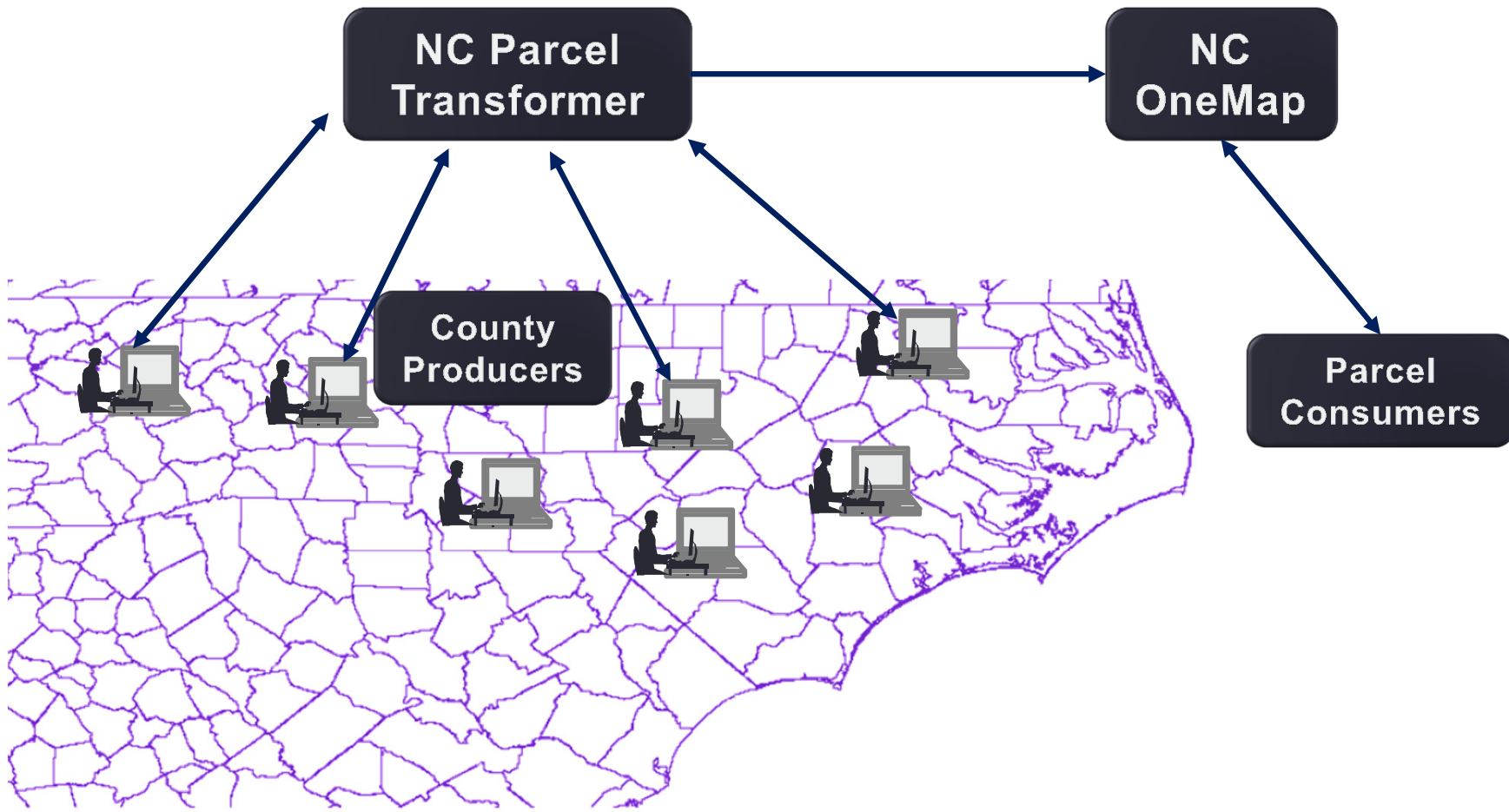
## Expertise

- > **Application development**
- > **Parcel data / standards**
- > **Parcel data analysis / management**
- > Project management / partners
- > Parcel data / standards
- > Parcel integration
- > Parcel data applications
- > Data development and management
- > **Technical advice and oversight**
- > Project management advice, oversight, technical advice

## Solution - Achieved

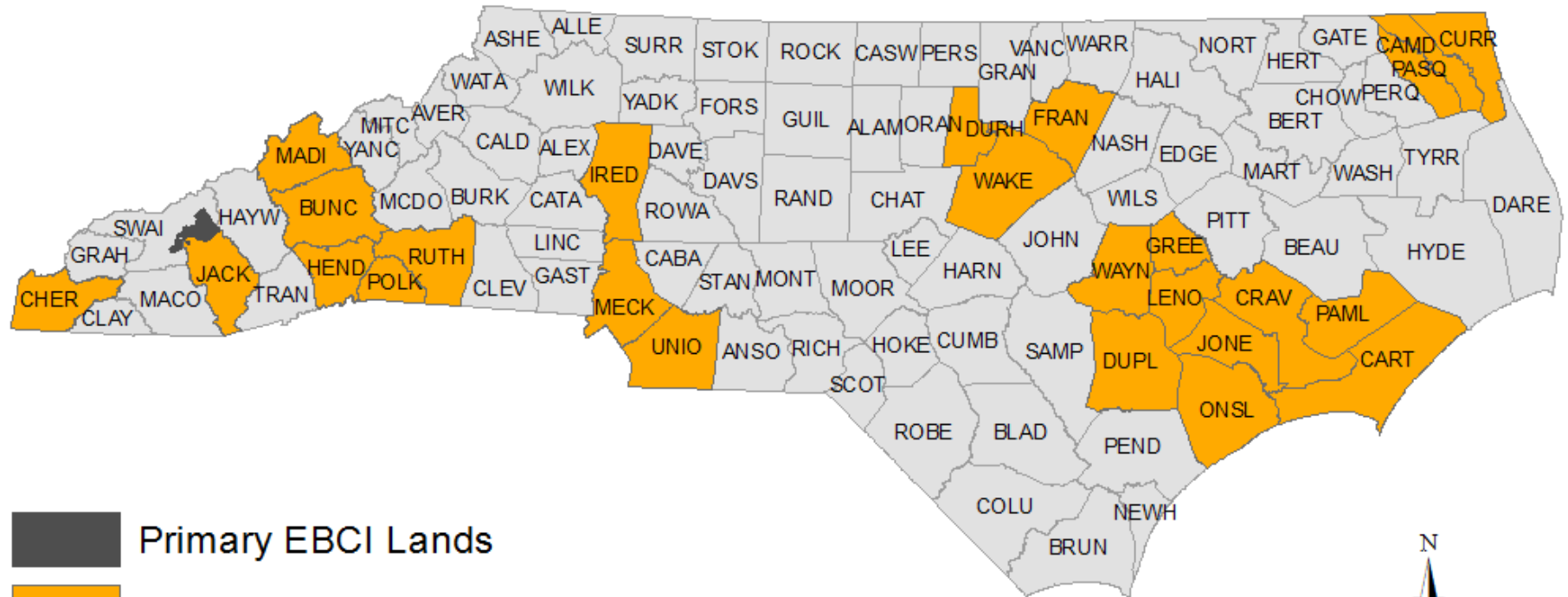
- Integrated authoritative county parcel data
- Standardized / translated
- Online tool
- Serving data for public discovery and access
  - NC OneMap
- Publishing in open data formats
- Results for 25 counties

# Work Flow for Standardized Parcels

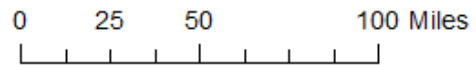




# North Carolina and Eastern Band of Cherokee Indians Integrated Cadastral Data Exchange Project Participants



- Primary EBCI Lands
- First set of counties (25)
- Other counties



Sources: NC Center for Geographic Information and Analysis  
and the Working Group for Seamless Parcels,  
Statewide Mapping Advisory Committee.

January 2014



# Local Data Management

**No** need to change:

- Tax systems
- Data field names
- Web map viewers
- Data distribution policies

Just **share** data using the online Transformer

## Online Access to Standardized Parcels

- NC OneMap

<http://data.nconemap.com>

- Get copies of standardized data
- Use web services in GIS and applications

## Search

**Records shown from: NC OneMap GeoSpatial Portal**  
 Click here to select different site(s) or configure search.

### More Search Options

[Clear](#)

### WHERE

- Anywhere
- Intersecting
- Fully within



Results 1-3 of 3 record(s)

- Expand results
- [Zoom To Results](#)
- [Zoom To Searched Area](#)

#### [NC Parcel Boundaries and Standard Fields - Download](#)

This digital geospatial dataset represents parcel boundaries with standard core attributes for a collection of parcel data from North Carolina county data producers and the Eastern Band of Cherokee Indians. The Integrated Cadastral Data Exchange project ...

- [Download/Open](#)
- [Details](#)
- [Metadata XML](#)
- [Zoom To](#)

#### [NC Parcel Boundaries and Standard Fields - ArcGIS Feature Service](#)

This digital geospatial dataset represents parcel boundaries with standard core attributes for a collection of parcel data from North Carolina county data producers and the Eastern Band of Cherokee Indians. The Integrated Cadastral Data Exchange project t...

- [Download/Open](#)
- [Preview](#)
- [Add To Map](#)
- [Details](#)
- [Metadata XML](#)
- [Zoom To](#)

#### [NC Parcel Boundaries and Standard Fields - ArcGIS Map Service](#)

This digital geospatial dataset represents parcel boundaries with standard core attributes for a collection of parcel data from North Carolina county data producers and the Eastern Band of Cherokee Indians. The Integrated Cadastral Data Exchange project ...

- [Download/Open](#)
- [Preview](#)
- [Globe \(.kml\)](#)
- [ArcGIS Explorer \(.nmf\)](#)
- [ArcGIS \(.lyr\)](#)
- [Add To Map](#)
- [Details](#)
- [Metadata XML](#)
- [Zoom To](#)

# Key Ingredients and NC Progress

- ✓ Consistent
  - Standardized fields for multi-county analysis
- ✓ Data fields that support a wide range of questions
  - Value
  - Structure(s) on property
  - Parcel use
- **Complete**
- **Current**
- ✓ Well documented
- ✓ Public access to web services and downloadable data

# NC Parcels: Phase 2



# Engage Producers and Expand

- Operate and maintain tool and data
- Reach out to data producers
- Add 75 more counties
- Assist with transformations
- Release new content monthly
- Realize benefits

Feb. 25-27, 2015 Raleigh, NC

# NCGIS2015

Mobile and Global



<http://ncgisconference.com>



# Discussion

# CGIA

Contacts:

---

[tim.johnson@nc.gov](mailto:tim.johnson@nc.gov)

[jeff.brown@nc.gov](mailto:jeff.brown@nc.gov)

